

Your Personalised Land Rover

RANGE ROVER SPORT

Range Rover Sport HSE Dynamic Black Ingenium 3.0 litre 6-cylinder 300PS Turbocharged Diesel MHEV (Automatic) All Wheel Drive



ABOVE & BEYOND



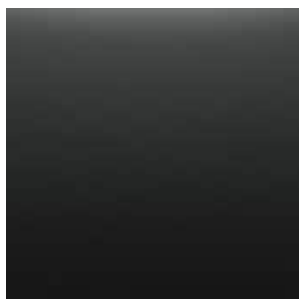


EXTERIOR



Exterior Features

	DESCRIPTION
COLOURS	Carpathian Grey
COLOUR TONE	Gloss Finish
WHEELS	22" Style 9012, 9 split-spoke, Gloss Black
BRAKES AND CALIPERS	Grey anodised brake calipers
ROOF COLOUR	Black contrast roof
ROOF TYPE	Sliding panoramic roof
GLASS	Privacy glass
GLASS	Acoustic front and toughened rear side glass
HEADLIGHTS	Matrix LED headlights with signature DRL



COLOURS

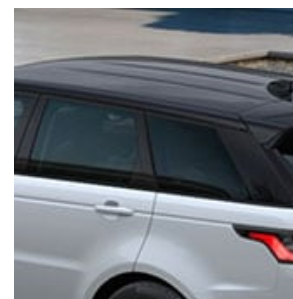
COLOUR TONE



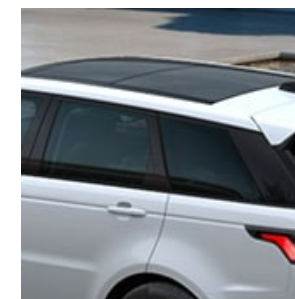
WHEELS



BRAKES AND CALIPERS



ROOF COLOUR



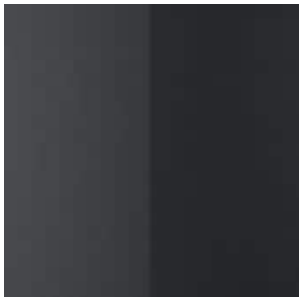
ROOF TYPE

INTERIOR



Interior Features

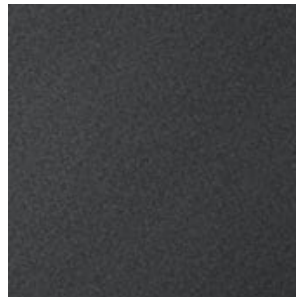
	DESCRIPTION
INTERIOR CHOICES	Ebony/Ebony with Ebony seats - Windsor Leather (Extended Leather Pack)
SEATING STYLES	16-way memory front seats
HEATED SEAT OPTION	Heated front and rear seats
REAR SEAT ENTERTAINMENT	Standard Rear Seats - No Rear Seat Entertainment
2 THIRD ROW SEATS	5 seats
SEAT FUNCTIONALITY	60:40 load through rear seats
HEADLINING	Ebony Morzine
FINISHERS	Grand Black veneer
AUDIO	Meridian™ Surround Sound System



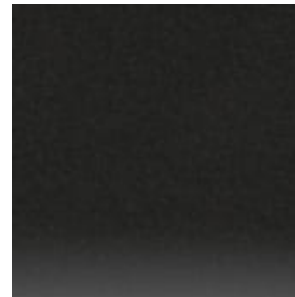
INTERIOR CHOICES



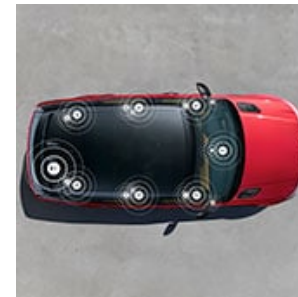
SEAT FUNCTIONALITY



HEADLINING



FINISHERS



AUDIO

OPTIONS

DESCRIPTION

PACKS

Drive Pack	Blind Spot Monitor Driver Condition Monitor Traffic Sign Recognition and Adaptive Speed Limiter
------------	---

EXTERIOR FEATURES

Heated, electric, power fold, memory door mirrors with approach lights and auto-dimming driver side	Includes Approach Lamps. Includes Memory function and Auto Reverse Dipping when fitted with memory seats.
---	---

INTERIOR FEATURES

Carpet mats	-
-------------	---

INFOTAINMENT

Head-up Display	Without distraction or the need for you to take your eyes off the road, Head-up Display is an option that presents key vehicle data such as your speed, gear position and navigation directions on the windscreen. It features crystal clear full-colour graphics in high resolution, enabling you to see all driver inputs and information with ease. It can display important information from the Touch Pro Touchscreen including phone information such as an incoming call. The feature can be turned on and off dependent on driver preference.
-----------------	---

CONVENIENCE

Three-zone Climate Control	<p>The climate control system has been tested in punishing real-world conditions with temperatures from -40 to +50°C, achieving optimum luxury and cooling performance for the Range Rover Sport.</p> <p>Three-zone Climate Control has separate temperature controls for driver and the front passenger and rear seats. Either rear passenger can control the temperature, however, the temperature change will be made across the entire second row.</p>
----------------------------	--

DESCRIPTION

The following features are standard with Three Zone Climate Control: Mist Sensing / Auto Demisting, Filter - Air / Purifier Pollen, Smog Sensing / Auto Recirculation, Climate Control Memory Pre-Set to Drivers' Last Temperature setting.

DRIVER ASSISTANCE

360° Surround Camera

Using four digital cameras discretely placed around the vehicle, providing a 360° overhead view on the Touchscreen. With the capacity to display several different views at the same time, this helps with various manoeuvres from parking by a kerb, to getting in and out of tight spaces and junctions.

The Tow Assist feature helps with reversing by predicting the trailer's direction. You can even choose your trailer's width for precise guidelines displayed on the Touchscreen.

Adaptive Cruise Control

-

High-speed Emergency Braking

-

STANDARD FEATURES

VISUAL PACKS

Black Exterior Pack

DYNAMICS

Electric Power Assisted Steering (EPAS)

Dynamic Stability Control (DSC)

ECO mode

Low traction launch

Roll Stability Control (RSC)

Cornering Brake Control (CBC)

Hill Descent Control (HDC)

Electric Parking Brake (EPB)

Electronic Brake-force Distribution (EBD)

Gradient Acceleration Control (GAC)

Gradient Release Control (GRC)

Locking fuel flap

Low level coolant sensor

Service intervals sensors

Electronic Traction Control (ETC)

Brake pre-fill

Electronic Air Suspension

Single-speed transfer box (high range only)

Terrain Response

Hill Launch Assist

EXTERIOR FEATURES

Roof rack mounting provisions

Heated rear window

Acoustic laminated windscreen

Rain sensing windscreen wipers

Heated windscreen

Engine Cover

Left to Right Easy Config Headlights

Automatic headlights

Follow me home lighting

EXTERIOR FEATURES

Rear fog light(s)

Headlight power wash

Front fog lights

Power fold, heated door mirrors with memory and approach lights

WHEELS AND TYRES

Tyre Pressure Monitoring System (TPMS)

Locking wheel nuts

Reduced section alloy spare wheel

INTERIOR FEATURES

Sunvisors with vanity mirrors

Electric windows with one-touch open/close and anti-trap

Lockable glovebox

Front and rear cupholders

Front and rear grab handles

Front door storage space

Electrically adjustable steering column

Ambient Interior Lighting

Satin Chrome gearshift paddles

Bright metal pedals

Heated front seats

Leather steering wheel with Atlas bezel

Aluminium treadplates with Range Rover script

Auto-dimming interior rear view mirror

INFOTAINMENT

Touch Pro Duo	Interactive Driver Display	Navigation Pro
10" Touch Pro	Protect	Pro Services and Wi-Fi Hotspot
Remote Premium	12V power socket(s)	All Terrain Info Centre
Bluetooth® connectivity	Digital Audio Broadcast (DAB) radio	Android Auto™
Apple CarPlay®		

CONVENIENCE

Push Button Start	Centre console with armrest	Rear centre armrest
Loadspace light	Loadspace mounting provisions	Loadspace Cover
Two-zone Climate Control	Keyless Entry	Powered Single-Piece Tailgate

DRIVER ASSISTANCE

Emergency Braking	Lane Departure Warning	Cruise Control and Speed Limiter
Rear Camera	Front and Rear Parking Aid	

TOWING

Trailer Stability Assist (TSA)

Electrical towing preparation

Front and rear recovery eyes

SAFETY & SECURITY

Anti-lock Braking System (ABS)

Emergency Brake Assist

Intrusion sensor

Customer Configurable Autolock

Customer Configurable Single Point Entry

Power operated child locks

Rear ISOFIX

Front airbags, with passenger seat occupant detector

Seat belt pre-tensioners

First Aid Kit

Secure Tracker (12 Month Subscription)

Side repeater indicators in mirror

Speed Limiter

TECHNICAL SPECIFICATIONS

PERFORMANCE

Maximum speed km/h (mph)	209 (130)
Acceleration (secs) 0-100 km/h (0-60mph)	7,3 (6,9)

FUEL ECONOMY

Combined NEDC Equivalent (NEDC2) Consumption - l/100km (mpg)	7,6 (37,2) - 8,3 (34,0)†
Combined NEDC Equivalent (NEDC2) CO ₂ Emissions - g/km	200 - 220†
Combined WLTP Consumption - l/100km (mpg)	8,3 (34,0) - 9,7 (29,2)††
Combined WLTP CO ₂ Emissions - g/km	218 - 255††
Tank capacity (litres approx.)	86

POWERTRAIN

Capacity (cc)	2.997
Maximum power (PS/kW/rpm)	300 / 221 / 4.000
Maximum torque (Nm/rpm)	650 / 1.500-2.500
Transmission	Auto

WEIGHTS

Unladen weight (EU) (kg)	2.278 [△]
Unladen weight (DIN) (kg)	2.203 [▲]
Gross Vehicle Weight (GVW) (kg)	3.100 (5 Seat) / 3.230 (5+2 Seats)

TOWING

Unbraked trailer (kg)	750
Maximum towing (kg)	3.500
Maximum coupling point (nose weight) (kg)	150
Maximum vehicle and trailer combination (GTW) (kg)	6.600 (5 Seat) / 6.730 (5+2 Seats)

ROOF CARRYING

Maximum roof load (including cross bars) (kg)	100
---	-----

DIMENSIONS

Height (mm)	1.803
Length (mm)	4.879
Width with mirrors folded (mm)	2.073

DIMENSIONS

Width with mirrors out (mm)	2.220
Front wheel track (mm)	1.692
Rear wheel track (mm)	1.686
Wheelbase (mm)	2.923

HEADROOM

Maximum front/rear headroom with standard roof (mm)	1.002 / 992
Maximum front/rear headroom with panoramic roof (mm)	984 / 991

LEGROOM

Maximum front/rear legroom (mm)	1.004 / 940
---------------------------------	-------------

LOADSPACE CAPACITY

Height (mm)	837
Width (mm)	1.285
Width between arches (mm)	1.116
Length behind first row (mm)	1.852

LOADSPACE CAPACITY

Maximum loadspace volume behind first row - Dry (litres)	1.463◇
Maximum loadspace volume behind first row - Wet (litres)	1.686◆
Length behind second row (mm)	1.035
Maximum loadspace volume behind second row - Dry (litres)	623◇
Maximum loadspace volume behind second row - Wet (litres)	780◆
Length behind third row (mm)	390
Maximum loadspace volume behind third row - Dry (litres)	162◇‡‡
Maximum loadspace volume behind third row - Wet (litres)	221◆‡‡

GROUND CLEARANCE - STANDARD

Ride height (mm)	213
Approach Angle	26°
Departure Angle	26,2°
Ramp Angle	21,2°

GROUND CLEARANCE - OFF ROAD

Ride height (mm)	278
Approach Angle	33°
Departure Angle	30°
Ramp Angle	25,7°

WADING DEPTH

Maximum wading depth (mm)	850
---------------------------	-----

TURNING CIRCLE

Kerb-to-kerb (m)	12,39
Wall-to-wall (m)	12,5
Turns lock-to-lock (no. of turns)	2,7

YOUR CONFIGURATION

https://rules.config.landrover.com/lr2/r/summary/_/en_xi/l494_k215/48271/a-he494-300_a-le5/n-017ta_n-022bg_n-030rk_n-031ny_n-033eq_n-039ib_n-041cz_n-065am_n-079aj_n-086gc_n-1au



Vehicles shown are from the Land Rover Global range. Specifications, options and availability will vary between markets and should be verified with your local Land Rover Retailer.

†The figures provided are NEDC2 calculated from official manufacturer's WLTP tests in accordance with EU legislation. For comparison purposes only. Real world figures may differ. CO₂ and fuel economy figures may vary according to wheel fitment and optional extras fitted. NEDC2 are figures calculated using a Government formula from WLTP figures equivalent to what they would have been under the old NEDC test. The correct tax treatment can then be applied.

††WLTP is the new official EU test used to calculate standardised fuel consumption and CO₂ figures for passenger cars. It measures fuel, energy consumption, range and emissions. This is designed to provide figures closer to real-world driving behaviour. It tests vehicles with optional equipment and with a more demanding test procedure and driving profile. Figures are shown as a range under WLTP testing measures. The most economical figures refer to the most efficient/lightest set of options. The least economical figures refer to the least efficient/heaviest set of options. WLTP legislation dictates that where there is <5g CO₂ variance between the lowest and highest figures, only the highest is declared.

[1]Engine data has not been re-certified in 2020. Data shown conforms to the 2017 NEDC certification.

‡When fitted with optional 5+2 seating

△Includes a 75kg driver, full fluids and 90% fuel

▲Includes full fluids and 90% fuel

▽Dynamic models only

‡‡Not available on HST

◇Dry: Volume as measured with VDA-compliant solid blocks (200mm x 50mm x 100mm).

◆Wet: Volume as measured by simulating the loadspace filled with liquid.

◆With 22" wheels & non-Pano roof fitted

◇With 22" wheels & Pano roof fitted

Weights reflect vehicles to standard specifications. Optional extras increase weight.

- [COOKIE AND PRIVACY POLICY](#)
- [TERMS AND CONDITIONS](#)
- [CONTACT US](#)
- [INTERNATIONAL STANDARDS](#)
- [SELECT A COUNTRY](#)
- [SITE DISCLAIMER](#)
- [ACCESSIBILITY STATEMENT](#)



ABOVE & BEYOND